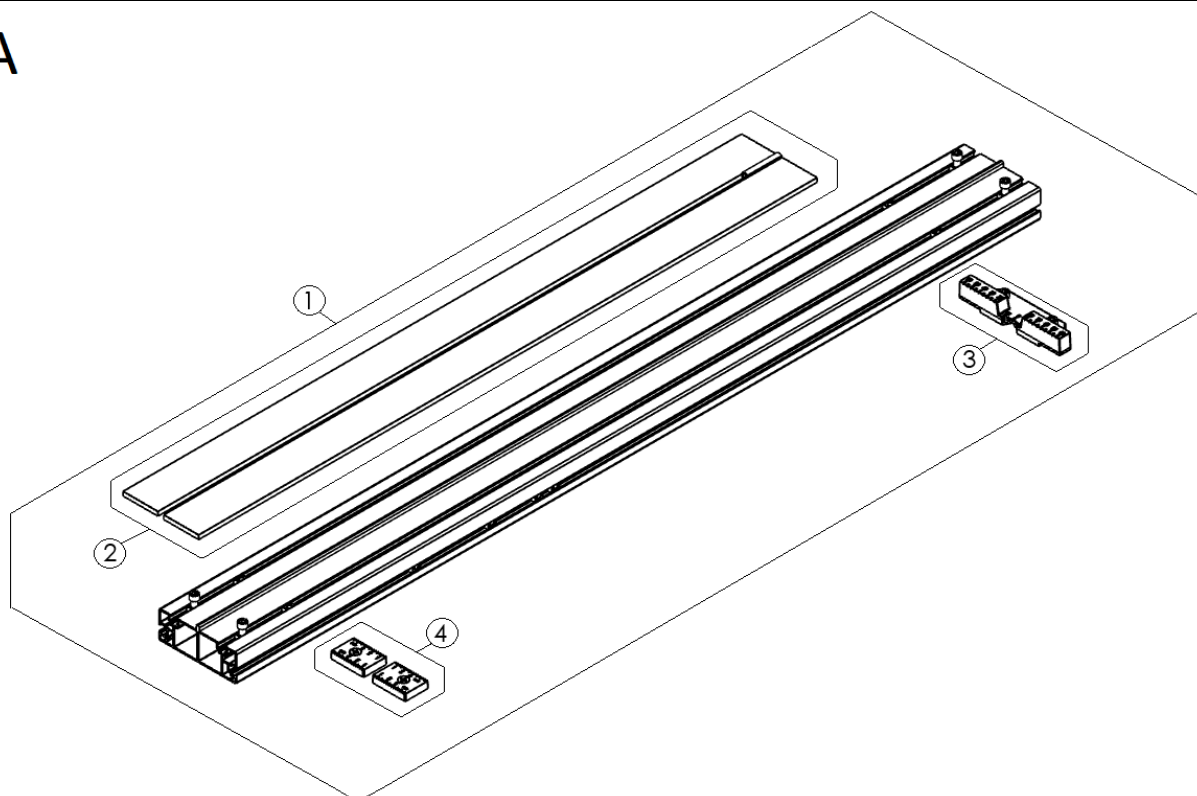


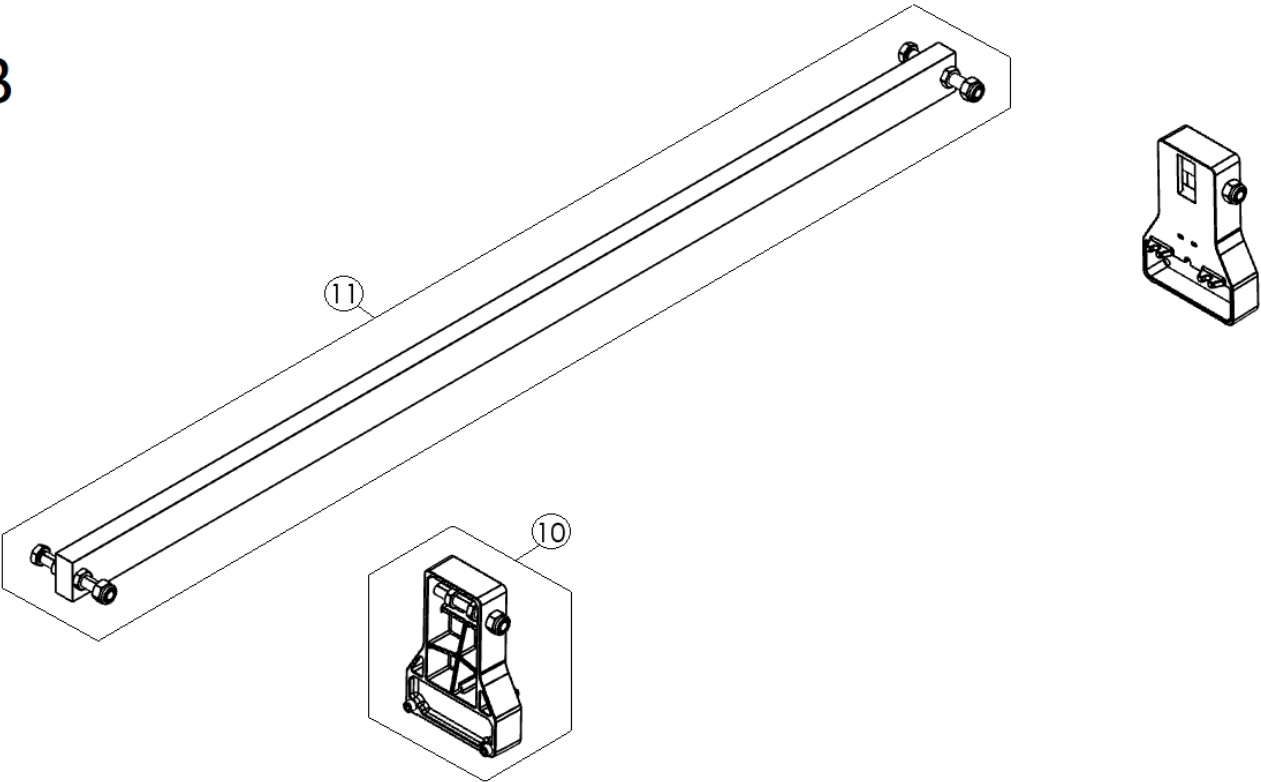
Part-list	ES	EN	Prod.
	GRUPO A	GROUP A	Pag. 2
888	GRUPO B	GROUP B	Pag. 3
88	GRUPO C	GROUP C	Pag. 4
888	GRUPO D	GROUP D	Pag. 5
Prod	ES	EN	From serial num:
16978	F-ONE 1200 SRT	F-ONE 1200 SRT	
16977	F-ONE 800 SRT	F-ONE 800 SRT	

A



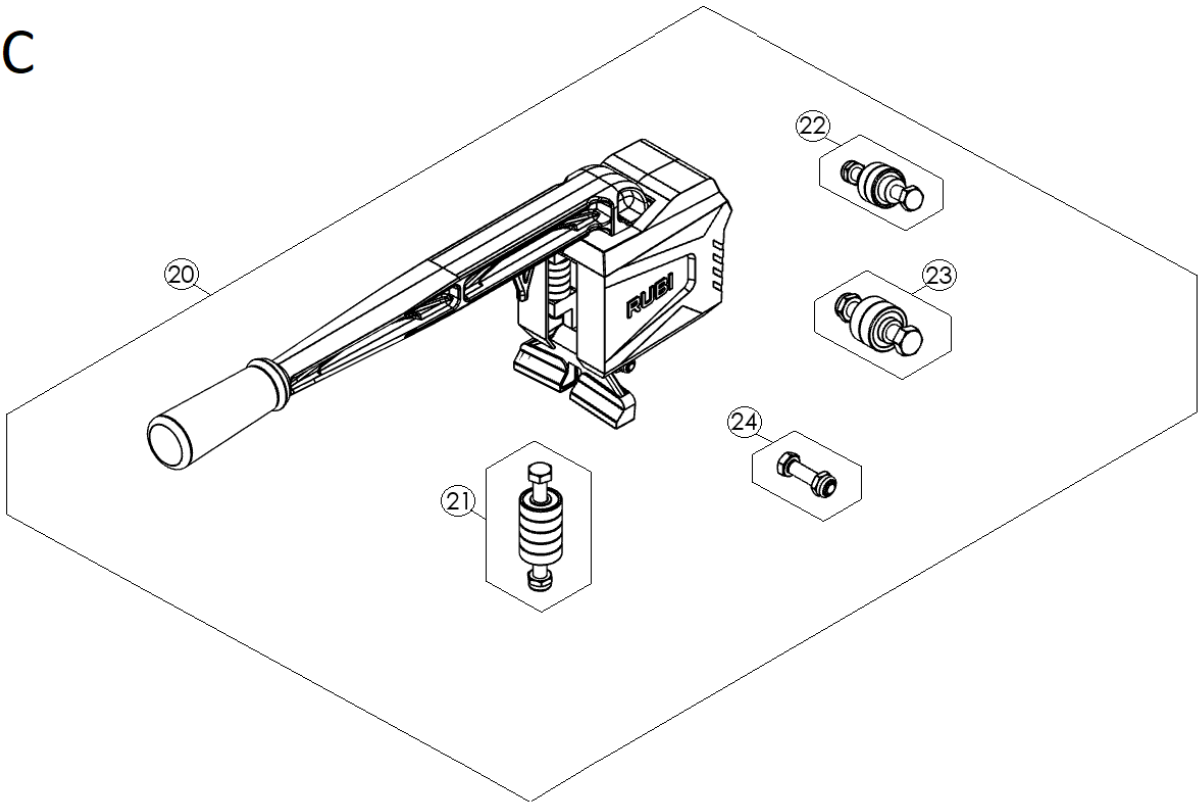
Part-list	ES	EN	Prod.
1 23853 1	REC.BASE F-ONE 1200	SP.BASE F-ONE 1200	16978
1 23851 1	REC.BASE F-ONE 800	SP.BASE F-ONE 800	16977
2 23855 1	REC.GOMAS F-ONE 1200	SP.RUBBERS F-ONE 1200	16978
2 23854 1	REC.GOMAS F-ONE 800	SP.RUBBERS F-ONE 800	16977
3 23857 1	REC.ESCUADRA F-ONE	SP.SQUARE F-ONE	
4 23858 1	REC.REGLA F-ONE	SP.RULER F-ONE	

B

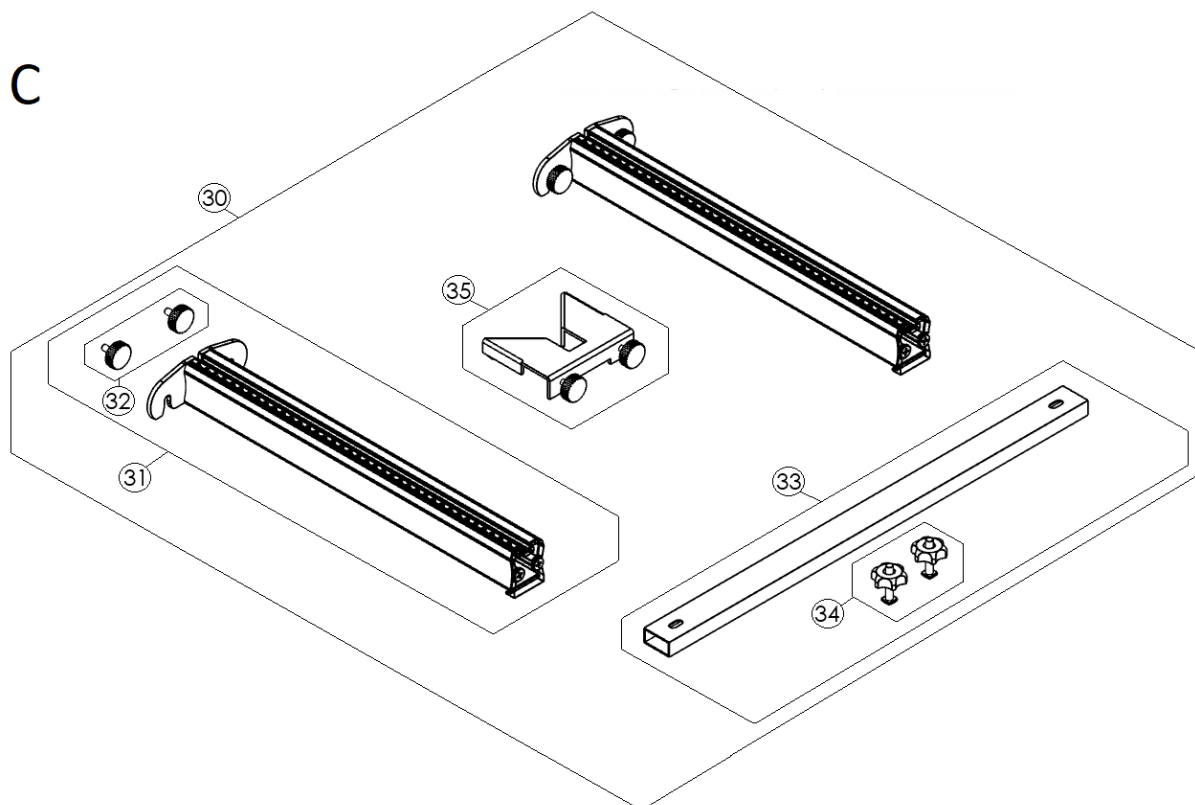


Part-list			ES	EN	Prod.
10	23859	2	REC.SOPORTE GUIA F-ONE	SP.GUIDE SUPPORT F-ONE	
11	23862	1	REC.GUIA F-ONE 1200	SP.GUIDE F-ONE 1200	16978
11	23861	1	REC.GUIA F-ONE 800	SP.GUIDE F-ONE 800	16977

C



Part-list			ES	EN	Prod.
20	23863	1	REC.SEPARADOR F-ONE	SP.SEPARATOR F-ONE	
21	23865	2	REC.RODAMIENTOS LATERALES F-ONE	SP.LATERAL BEARINGS F-ONE	
22	23866	1	REC.RODAMIENTOS SUPERIORES F-ONE	SP.TOP BEARINGS F-ONE	
23	23867	1	REC.RODAMIENTOS INFERIORES F-ONE	SP.LOWER BEARINGS F-ONE	
24	23869	1	REC.EJE RULINA F-ONE	SP.SCORE SHAFT	



Part-list		ES	EN	Prod.	
30	10828	1	TOPE LATERAL DOBLE PARA F-ONE 1200	DOUBLE SIDE STOP FOR F-ONE 1200	16978
30	10827	1	TOPE LATERAL DOBLE PARA F-ONE 800	DOUBLE SIDE STOP FOR F-ONE 800	16977
31	23874	2	REC.BRAZO INDIVIDUAL F-ONE 1200	SP.SINGLE ARM F-ONE 1200	16978
31	23873	2	REC.BRAZO INDIVIDUAL F-ONE 800	SP.SINGLE ARM F-ONE 800	16977
32	23875	2	REC.FIJACION BRAZOS F-ONE	SP.FASTENING ARM F-ONE	
33	23878	1	REC.DISTANCIADOR F-ONE 1200	SP.SPACER F-ONE 1200	16978
33	23877	1	REC.DISTANCIADOR F-ONE 800	SP.SPACER F-ONE 800	16977
34	23879	1	REC.POMO DISTANCIADOR F-ONE	SP.SPACER KNOB F-ONE	
35	23881	1	REC.SUPLEMENTO 45° F-ONE	SP.45° SUPPLEMENT F-ONE	