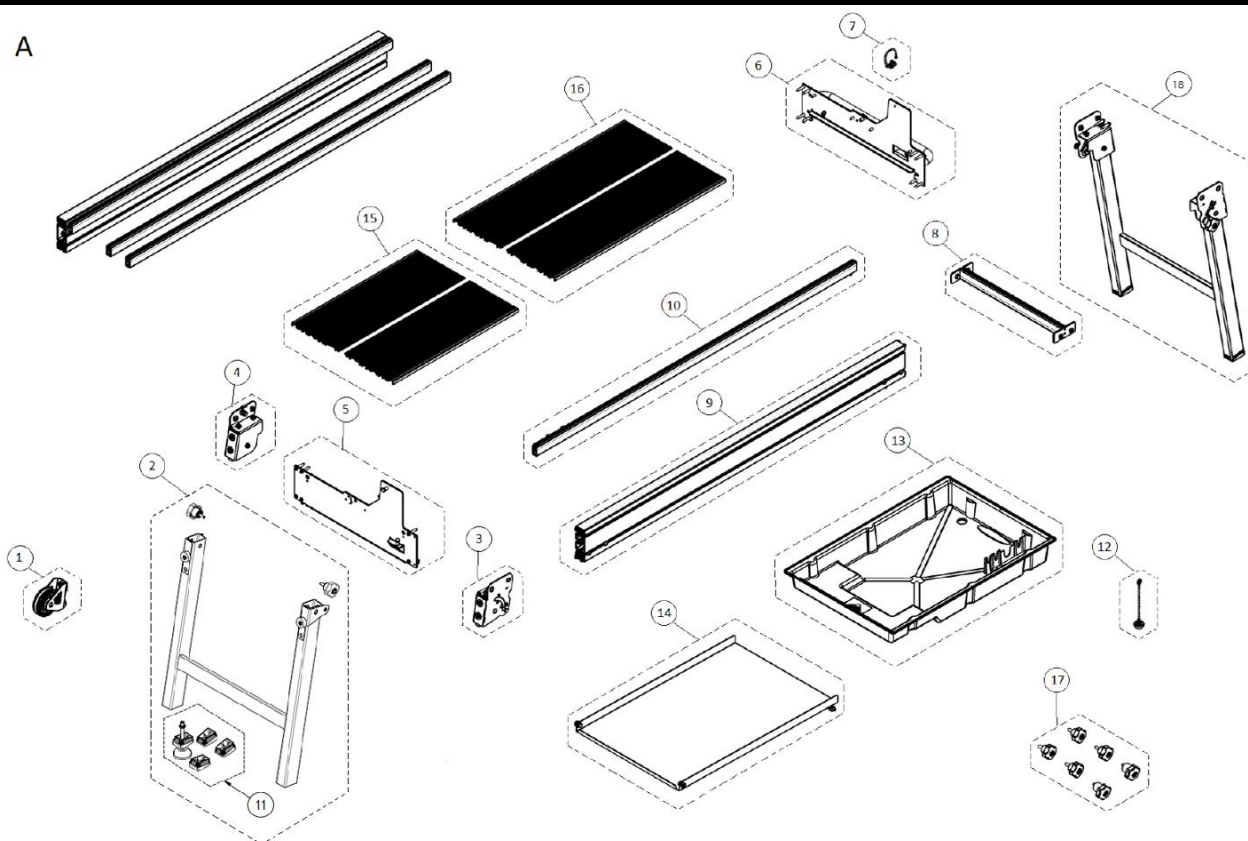
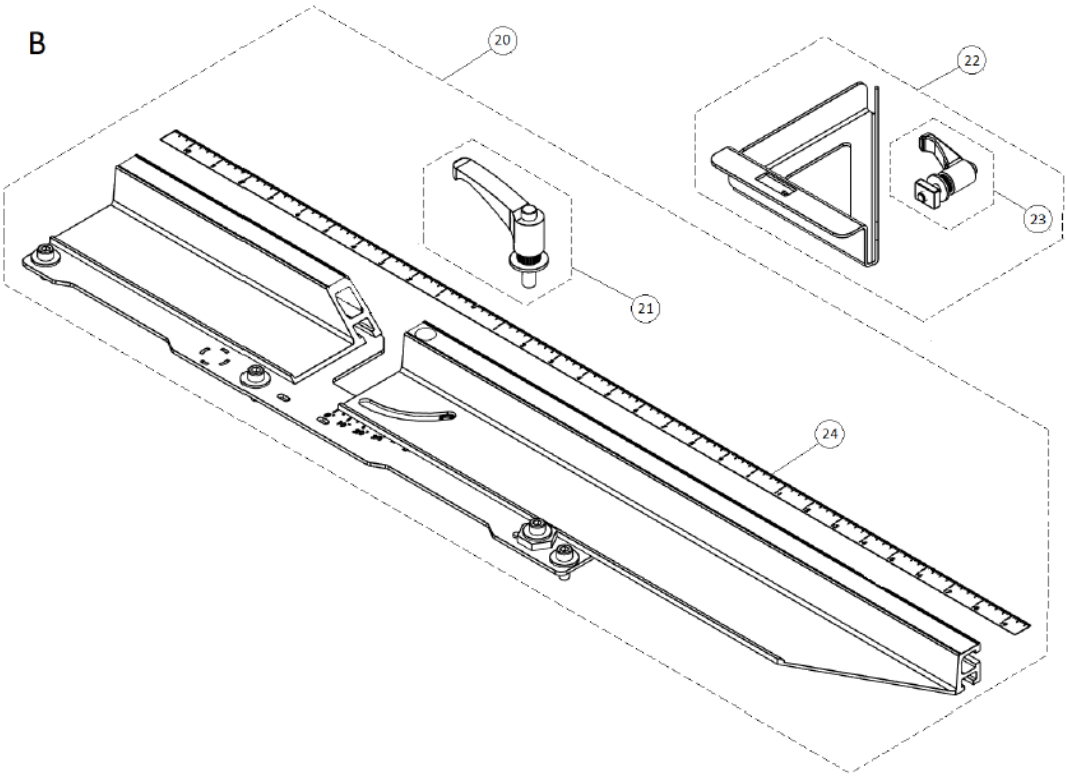


Part-list	ES	EN	Prod.
	GRUPO A	GROUP A	Pag. 2
888 88	GRUPO B	GROUP B	Pag. 3
	GRUPO C	GROUP C	Pag. 4
888 88	GRUPO D	GROUP D	Pag. 5
	GRUPO E	GROUP E	Pag. 6
888 88	GRUPO F	GROUP F	Pag. 7
	GRUPO G	GROUP G	Pag. 8

Prod	ES	EN	From serial num:
52928	DX-350-N 1300 110V 50HZ - 2,4 HP CORT.EL	DX-350-N 1300 110V 50HZ.UK	00014
52927	DX-350-N 1300 230V 50HZ - 2,4 HP CORT.EL	DX-350-N 1300 230V 50HZ.UK	00011
52918	DX-350-N 1300 120V 60HZ INCH -CORT.ELEC.	DX-350-N 1300 120V 60HZ INCH	1028
52917	DX-350-N 1300 110V 50HZ -CORT.ELEC.	DX-350-N 1300 110V 50HZ	739
52916	DX-350-N 1300 220V 60HZ -CORT.ELEC.	DX-350-N 1300 220V 60HZ	756
52915	DX-350-N 1300 230V 50HZ -CORT.ELEC.	DX-350-N 1300 230V 50HZ	53781
52906	DX-350-N 1000 220V 60HZ -CORT.ELEC.	DX-350-N 1000 220V 60HZ	621
52905	DX-350-N 1000 230V 50HZ -CORT.ELEC.	DX-350-N 1000 230V 50HZ	993

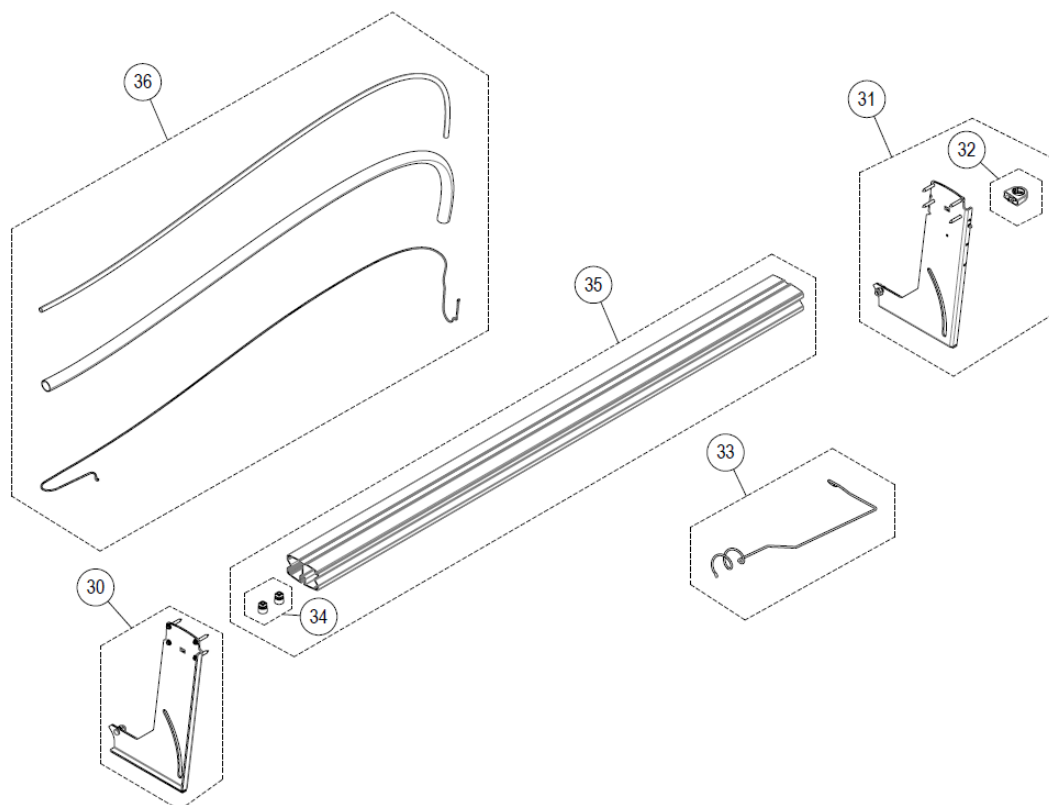


Part-list	ES	EN	Prod.
1 27804	2 REC.RUEDA REF:27804	SP.WHEEL REF:27804	
2 27859	1 REC.PATA TRASERA REF:27859	SP.REAR LEG REF:27859	
3 27806	1 REC.SOPORTE PATAS IZQ.REF:27806	SP.LEFT LEGS SUPPORT REF:27806	
4 27805	1 REC.SOPORTE PATAS DER. REF:27805	SP.RIGHT LEGS SUPPORT REF:27805	
5 27807	1 REC.FRONTAL DEL.REF:27807	SP.FRONT HEAD REF:27807	
6 27808	1 REC.FRONTAL TRAS.REF:27808	SP.FRONT FOREHEAD REF:27808	
7 27267	1 REC.CABLE TIERRA BRAZO REF:27267	SP.GROUND CABLE ARM REF:27267	
8 27259	1 REC.DISTANCIADOR CHASIS REF:27259	SP.CHASSIS SPACER REF:27259	
9 27305	2 REC.PERFIL CHASIS 1300 REF:27305	SP.CHASSIS PROFILE 1300 REF:27305	52915/16/17/18, 52927/28
9 27262	2 REC.PERFIL CHASIS 1000 REF:27262	SP.CHASSIS PROFILE 1000 REF:27262	52905, 52906
10 27306	4 REC.PERFIL ESTRUCTURA 1300 REF:27306	SP.STRUCTURE PROFILE 1300 REF:27306	52915/16/17/18, 52927/28
10 27263	4 REC.PERFIL ESTRUCTURA 1000 REF:27263	SP.STRUCTURE PROFILE 1000 REF:27263	52905, 52906
11 56776	1 REC.KIT CONTERAS DCX	SP.DCX END CAPS KIT	
12 57260	1 REC.TAPON CON CADENA Ø 35	SP.PLUG WITH CHAIN Ø 35	
13 27261	1 REC.DEPOSITO REF:27261	SP.TANK REF:27261	
14 27371	1 REC.DECANTADOR 1300 REF:27371	SP.DECANTER 1300 REF:27371	52915/16/17/18, 52927/28
14 27260	1 REC.DECANTADOR 1000 REF:27260	SP.DECANTER 1000 REF:27260	52905, 52906
15 57243	1 REC.JUEGO MESAS CORTAS	SP.SHORT TABLE SET	
16 57242	1 REC.JUEGO MESAS LARGAS	SP.LONG TABLE SET	
17 27809	1 REC.KIT POMOS REF:27809	SP.KNOBS KIT REF:27809	
18 27803	1 REC.PATA DELANTERA REF:27803	SP.FRONT LEG REF:27803	



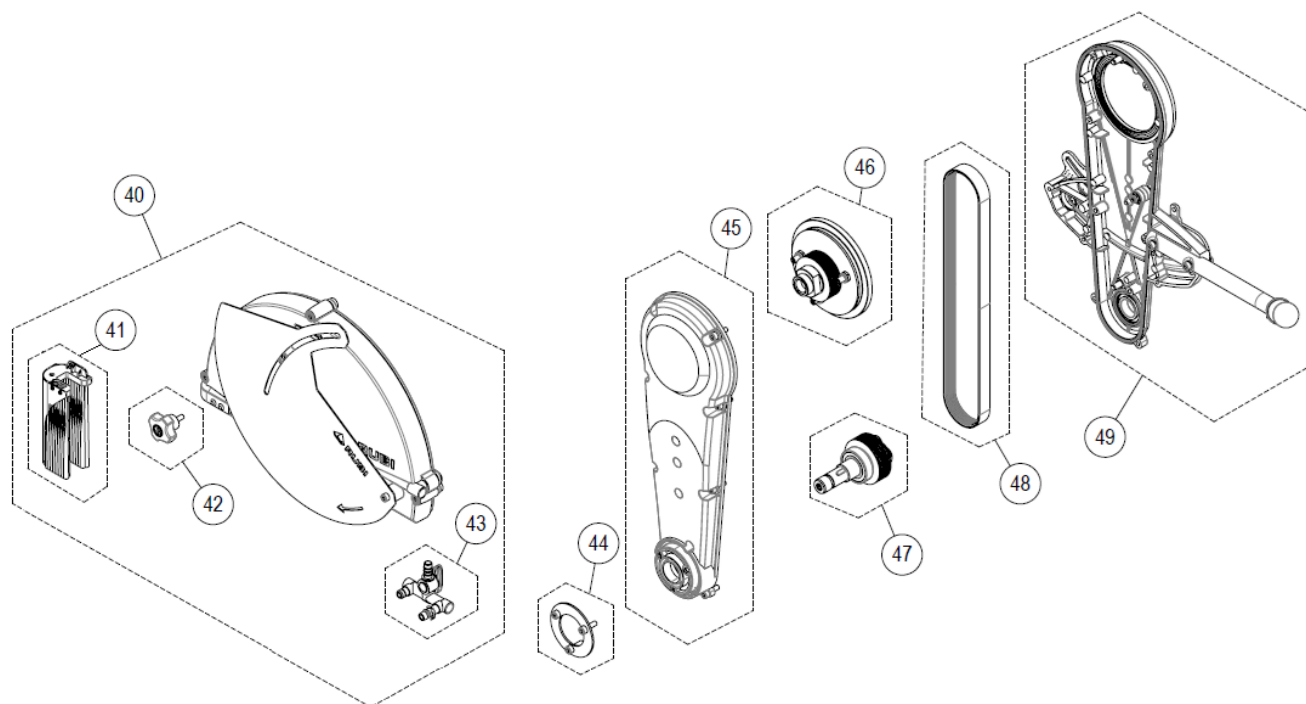
Part-list		ES	EN	Prod.
20	27269	1 REC.TOPE MESA REF:27269	SP.TABLE TOP REF:27269	
21	56879	1 REC.MANETA TOPE MESA REF:56879	SP.HANDLE TABLE STOP REF:56879	
22	54843	1 REC.TOPE LATERAL REF:54843	SP.SIDE STOP REF:54843	
23	52823	1 REC.MANETA TOPE 45°	SP.HANDLE 45° STOP	
24	27835	1 REC.CINTA METRICA INCH REF:27835	SP.TAPE MEASURE INCH REF:27835	52918
24	27834	1 REC.CINTA METRICA MM REF:27834	SP.TAPE MEASURE MM REF:27834	52905/06/15/16/17, 52927/28

C

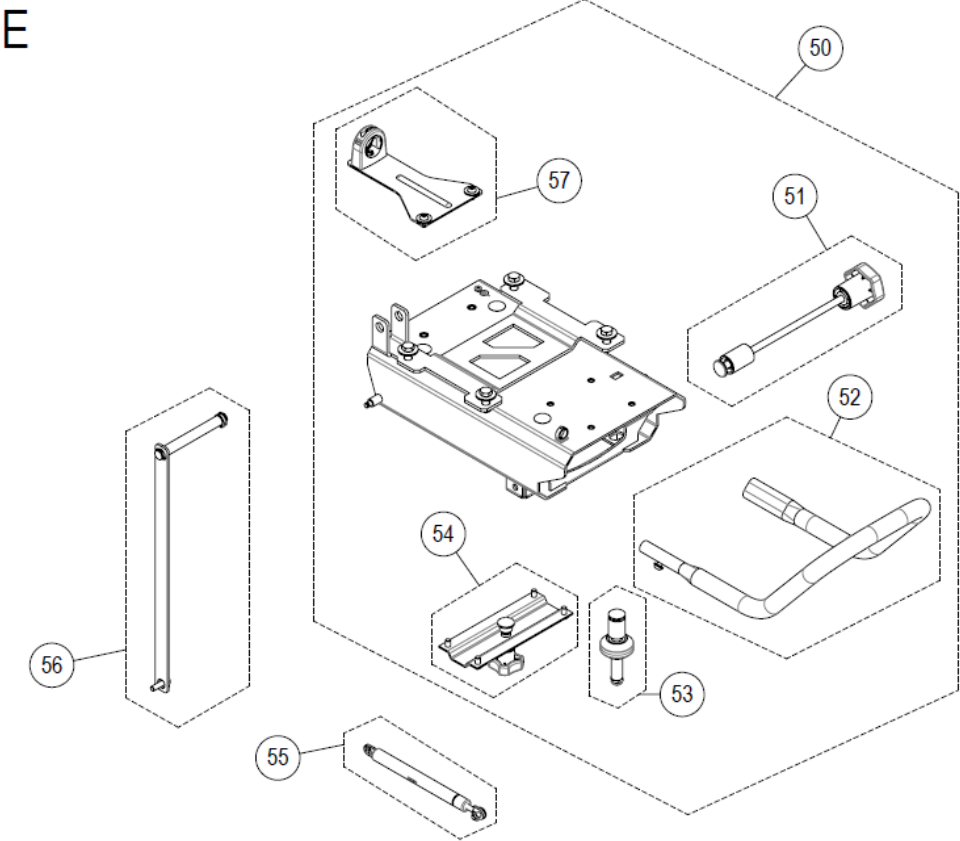


Part-list	ES	EN	Prod.
30 27271 1	REC.BRAZO ANTERIOR DX	SP.FRONT ARM DX	
31 27270 1	REC.BRAZO POSTERIOR DX	SP.REAR ARM DX	
32 56875 1	REC.GRAPA TUBO COARRUGADO REF:56875	SP.CLAMP CORRUGATED PIPE REF:56875	
33 56678 1	REC.ALZADOR REF:56678	SP.LIFTER REF:56678	
34 27274 1	REC.FRENO RECORRIDO GUIA REF:27274	SP.BRAKE TRAVEL GUIDE REF:27274	
35 27273 1	REC.GUIA 1300 REF:27273	SP.GUIDE 1300 REF:27273	52915/16/17/18, 52927/28
35 27272 1	REC.GUIA 1000 REF:27272	SP.GUIDE 1000 REF:27272	52905, 52906
36 27811 1	REC.KIT TUBOS 1300 REF:27811	SP.TUBE 1300 KIT REF:27811	52915/16/17/18, 52927/28
36 27810 1	REC.KIT TUBOS 1000 REF:27810	SP.TUBE 1000 KIT REF:27810	52905, 52906

D

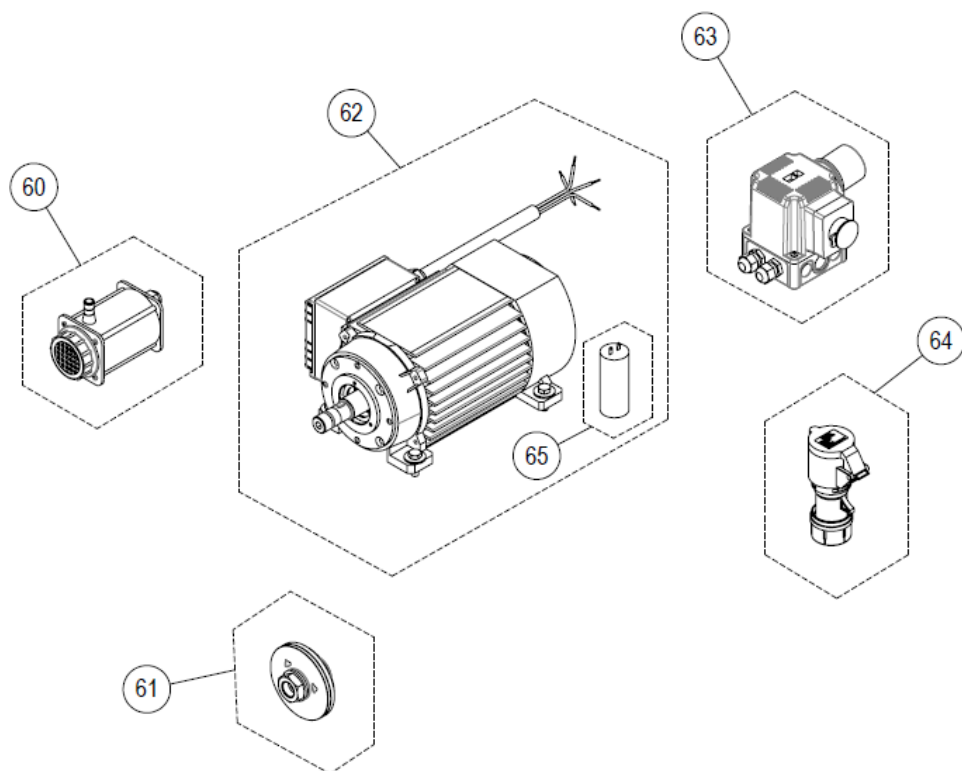


Part-list	ES	EN	Prod.
40	57825 1 REC.PROTECTOR DISCO REF:57825	SP.BLADE PROTECTOR REF:57825	
41	27279 1 REC.ZERO DUST REF:27279	SP.ZERO DUST REF:27279	
42	27384 1 REC.POMO TAPA DISCO REF:27384	SP.DISC COVER KNOB REF:27384	
43	27280 1 REC.REGULADOR CAUDAL	SP.FLOW REGULATOR	
44	27284 1 REC.FIJACION TAPA DISCO DX	SP.REAR DISC COVER ANCHOR DX	
45	27285 1 REC.TAPA BRAZO TRONZADORA	SP.DX CUTTER ARM COVER	
46	27287 1 REC.ANCLAJE BRAZO MOTOR DX	SP.DX MOTOR ARM ANCHOR	
47	27286 1 REC.EJE TRANSMISION DX	SP.DX DRIVE SHAFT	
48	27821 1 REC.CORREA BRAZO DX	SP.DX ARM STRAP	
49	27290 1 REC.BASE BRAZO TRONZADORA DX	SP.BASE FOR MITRE SAW ARM DX	



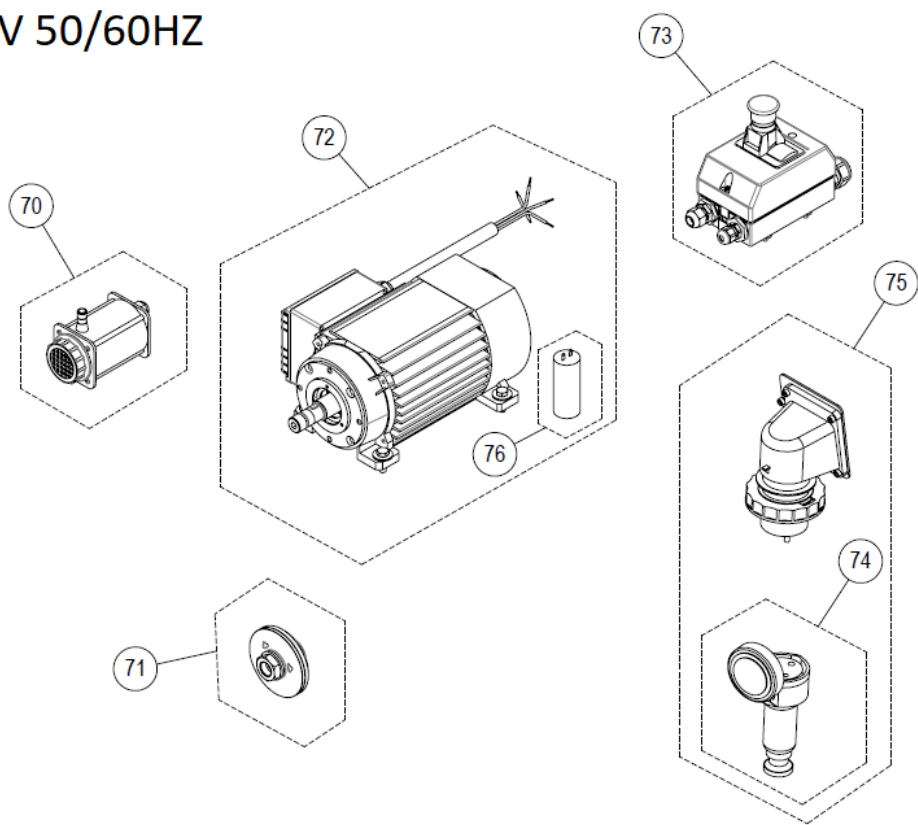
Part-list			ES	EN	Prod.
50	27298	1	CJ.CARRO MOTOR DX	DX ENGINE TROLLEY SET	
51	27293	1	REC.FIJACION TRONZADORA DX	SP.DX MITRE SAW CLAMPING	
52	27295	1	REC.ASA CARRO REF:27295	SP.HANDEL TROLLEY REF:27295	
53	27297	4	REC.RUEDA CARRO REF:27297	SP.TROLLEY WHEEL REF:27297	
54	27294	1	REC.FRENO CARRO DX	SP.TROLLEY BRAKE DX	
55	27292	1	REC.BRAZO HIDRAULICO DX	SP.DX HYDRAULIC ARM	
56	27282	1	REC.TIRANTE DX 350	SP.TIRANT DX 350	
57	27291	1	REC.FIJACION TUBO COARRUGADO REF:27291	SP.FIXING CORRUGATED PIPE REF:27291	

F1 230V 50/60HZ



Part-list	ES	EN	Prod.
60 56973 1	REC.BOMBA DE AGUA B200 3,6M 230V	SP.B-200 SPARE WATER PUMP 230V	52905/06/15/16, 52927
61 27283 1	REC.PLATOS DX	SP.DX FLANGES	
62 27820 1	REC.MOTOR 230V 50HZ 1,75KW REF:27820	SP.MOTOR 230V 50HZ 1,75KW REF:27820	52927
62 27817 1	REC.MOTOR 220V 60HZ REF:27817	SP.MOTOR 220V 60HZ REF:27817	52906, 52916
62 27816 1	REC.MOTOR 230V 50HZ REF:27816	SP.MOTOR 230V 50HZ REF:27816	52905, 52915
63 56670 1	REC.ARRANCADOR 230V 60HZ REF:56670	SP.STARTER 230V 60HZ REF:56670	52906, 52916
63 56669 1	REC.ARRANCADOR 230V 50HZ REF:56669	SP.STARTER 230V 50HZ REF:56669	52905, 52915, 52927
64 27832 1	REC.BASE AEREA REF:27832	SP.WANDER SOCKET REF:27832	52905/06/15/16, 52927
65 27845 1	REC.CONDENSADOR 45µF REF:27845	SP.CAPACITOR 45µF REF:27845	52905, 52906, 52915, 52916
65 27844 1	REC.CONDENSADOR 40µf REF:27844	SP.CAPACITOR 40µf FOR REF:27844	52927

F2 110/120V 50/60HZ



Part-list			ES	EN	Prod.
70	56974	1	REC.BOMBA DE AGUA B200 3,6M 110V	SP.B-200 SPARE WATER PUMP 110V	52917, 52918, 52928
71	27283	1	REC.PLATOS DX	SP.DX FLANGES	
72	27819	1	REC.MOTOR 120V 60HZ 1,75KW REF:27819	SP.MOTOR 120V 60HZ 1,75KW REF:27819	52928
72	27818	1	REC.MOTOR 120V 60HZ REF:27818	SP.MOTOR 120V 60HZ REF:27818	52918
73	51874	1	REC.ARRANCADOR 110V USA REF:51874	SP.STARTER 110V USA REF:51874	52918
73	27836	1	REC.ARRANCADOR 110V 50HZ REF:27836	SP.STARTER 110V 50HZ REF:27836	52917, 52928
74	27833	1	REC.BASE AEREA USA REF:27833	SP.WANDER SOCKET USA REF:27833	52917, 52918, 52928
75	27813	1	REC.ADAPT.ENCHUFE 2P-T MACHO REF:27813	SP.2P+T MALE PLUG ADAPTER REF:27813	52917, 52918, 52928
76	27846	1	REC.CONDENSADOR 100µF REF:27846	SP.CAPACITOR 100µF REF:27846	52917, 52918, 52928