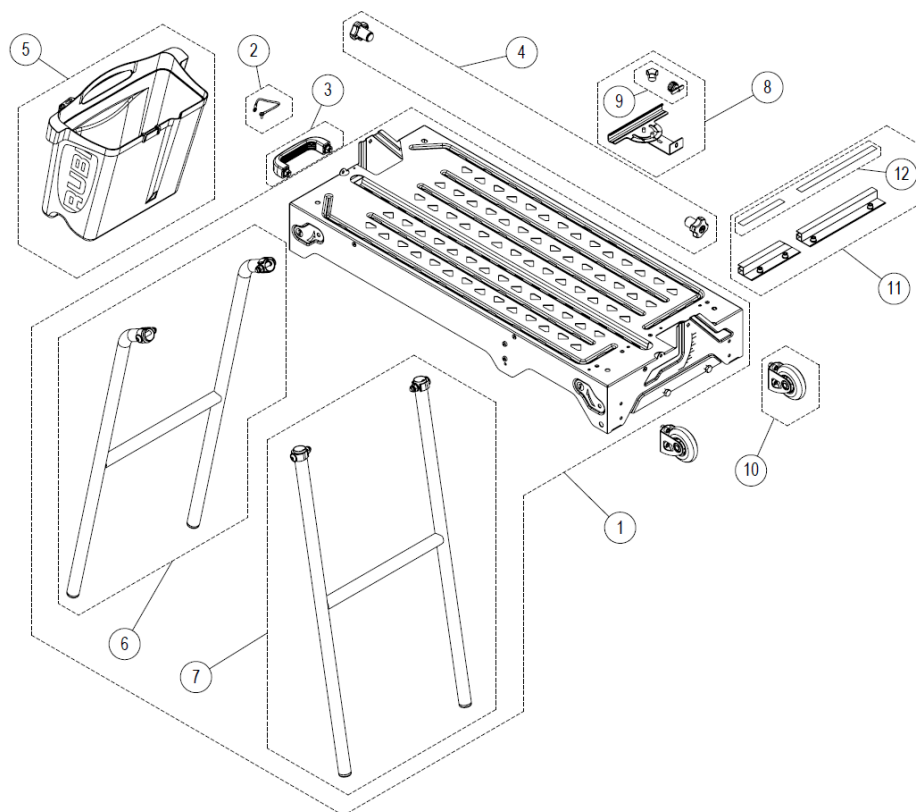


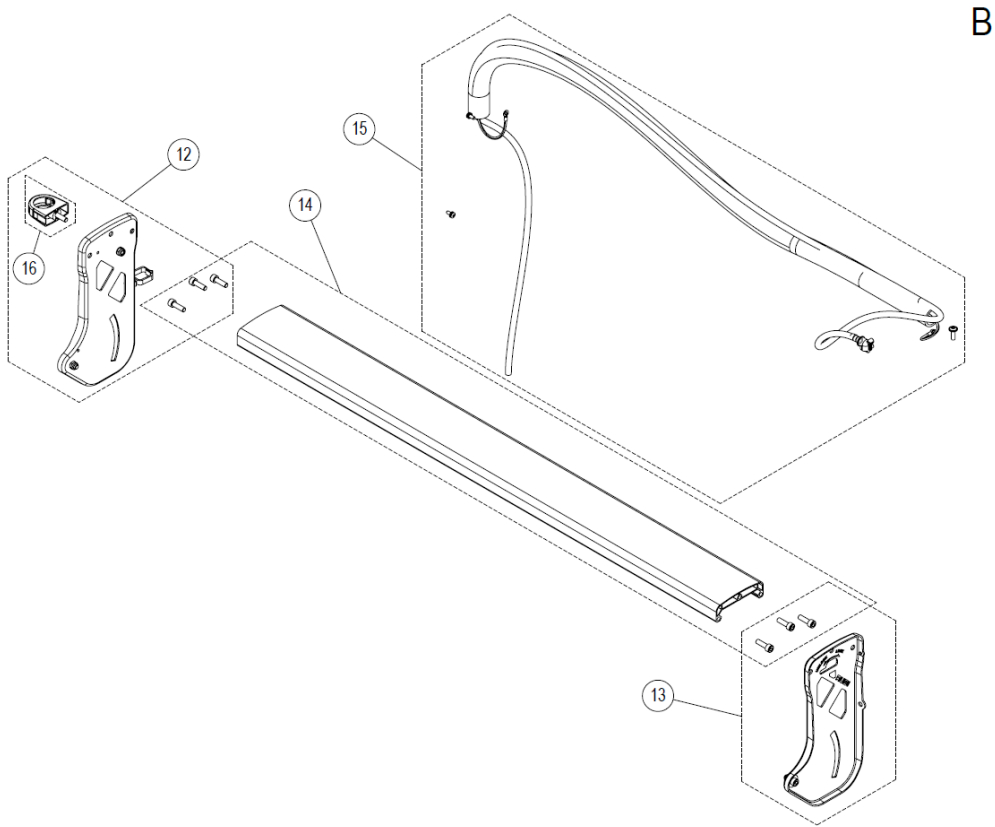
Part-list		ES	EN	Prod.
		GRUPO A	GROUP A	Pag. 2
888		GRUPO B	GROUP B	Pag. 3
88		GRUPO C	GROUP C	Pag. 4
888		GRUPO D	GROUP D	Pag. 5

Prod	ES	EN	From serial num:
55939	DU-200 EVO 650 240V 50HZ AUS.	DU-200 EVO 650 240V 50HZ AUS.	989
55938	DU-200 EVO 650 220V 60HZ	DU-200 EVO 650 220V 60HZ	843
55907	DU-200 EVO 650 120V 60HZ USA CEV SUPERPR	DU-200 EVO 650 120V 60HZ USA CEV SUPERPR	12701
55906	DU-200 EVO 650 110V 50HZ UK	DU-200 EVO 650 110V 50HZ UK	955
55905	DU-200 EVO 650 230V 50HZ UK	DU-200 EVO 650 230V 50HZ UK	11002
55903	DU-200 EVO 650 230V 50HZ -CORT.ELECT-	DU-200 EVO 650 230V 50HZ	98390
54977	DU-200 EVO 850 230V 50HZ UK CEV SUPERPRO	DU-200 EVO 850 230V 50HZ UK CEV SUPERPRO	2419
54976	DU-200 EVO 850 120V 60HZ USA CEV SUPERPR	DU-200 EVO 850 120V 60HZ USA CEV SUPERPR	634
54975	DU-200 EVO 850 230V 50HZ CEV SUPERPRO	DU-200 EVO 850 230V 50HZ CEV SUPERPRO	204651

A

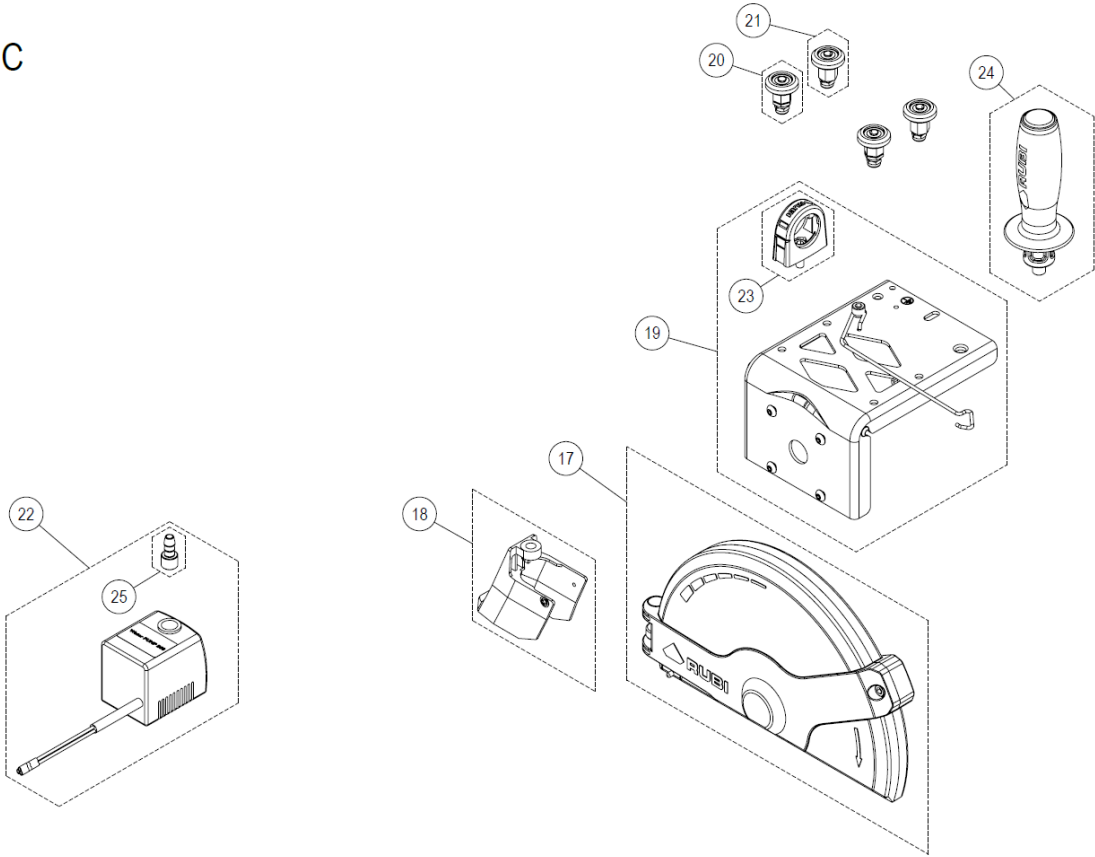


Part-list	ES	EN	Prod.
1 56639 1	REC.CHASIS DU EVO 850	SP.CHASIS DU EVO 850	54975, 54976, 54977
1 56638 1	REC.CHASIS DU EVO 650	SP.CHASIS DU EVO 650	55903, 55938, 55939, 55907, 55906, 55905
2 57611 1	REC.CABLE TIERRA DU EVO	SP.GROUND CONECTION DU EVO	
3 20282 1	REC.ASA REF:20282	SP.HANDLE SET REF:20282	
4 57612 1	REC.KIT POMOS DU EVO	SP.KNOBS SET DU EVO	
5 57613 1	REC.DEPOSITO DU EVO	SP.TANK DU EVO	
6 57673 1	REC.PATA DELANTERA DU EVO 850	SP.FRONT LEG DU EVO 850	54975, 54976, 54977
6 57672 1	REC.PATA DELANTERA DU EVO 650	SP.FRONT LEG DU EVO 650	55903, 55938, 55939, 55907, 55906, 55905
7 57678 1	REC.PATA TRASERA DU EVO 850	SP.BACK LEG DU EVO 850	54975, 54976, 54977
7 57674 1	REC.PATA TRASERA DU EVO 650	SP.BACK LEG DU EVO 650	55903, 55938, 55939, 55907, 55906, 55905
8 57709 1	REC.TOPE LATERAL DU EVO	SP.LATERAL STOP DU EVO	
9 57679 1	REC.POMOS TOPE LATERAL DU EVO	SP.KNOBS LATERAL STOP DU EVO	
10 56637 2	REC.RUEDA DU EVO	SP.WHEEL DU EVO	
11 57682 1	REC.TOPE MESA DU EVO	SP.TABLE TOP DU EVO	
12 57681 1	REC.CINTA METRICA INCH DU EVO	SP.LABEL TABLE TOP INCH DU EVO	55907, 54976
12 57680 1	REC.CINTA METRICA MM DU EVO	SP.LABEL TABLE TOP MM DU EVO	55903, 938, 939, 906, 905, 54975, 54977



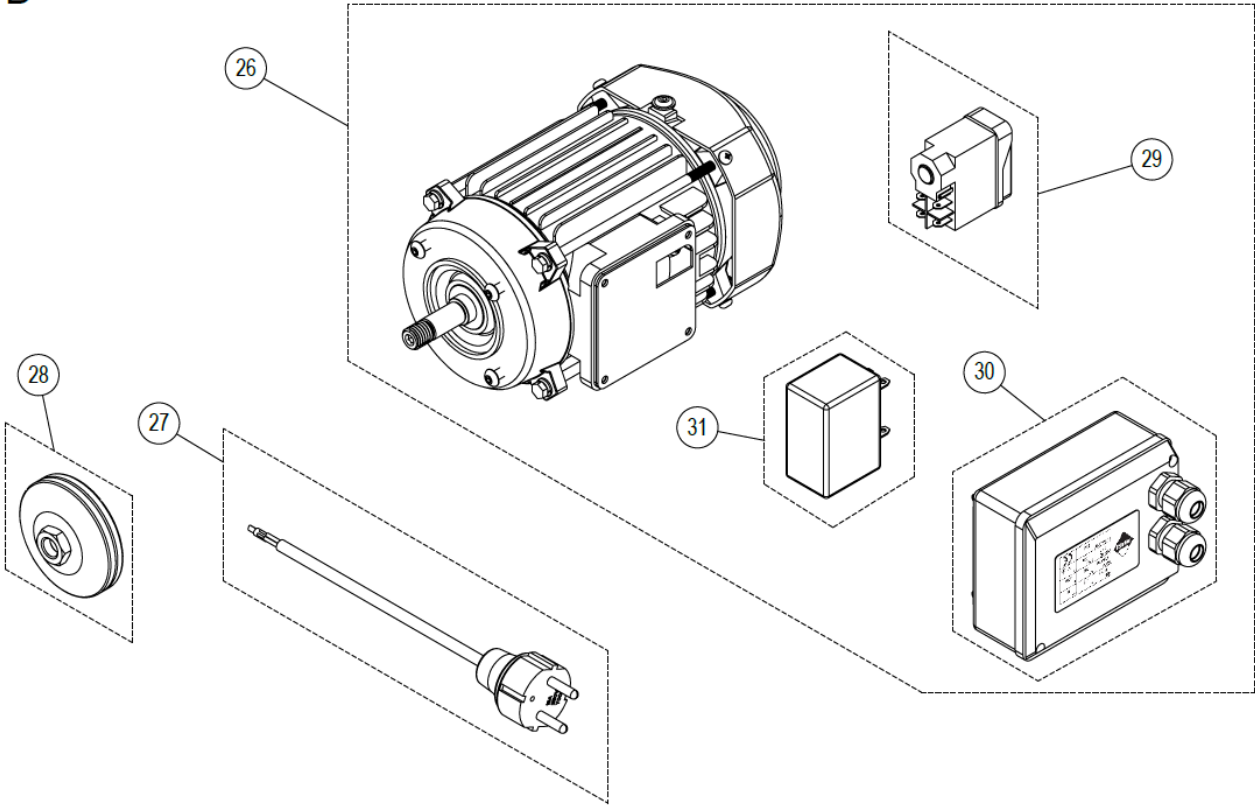
Part-list		ES	EN	Prod.
12	56630	1 REC.BRAZO POSTERIOR DU EVO	SP.REAR ARM DU EVO	
13	57683	1 REC.BRAZO ANTERIOR DU EVO	SP.FRONT ARM DU EVO	
14	57685	1 REC.GUIA DU EVO 850	SP.GUIDE DU EVO 850	54975, 54976, 54977
14	57684	1 REC.GUIA DU EVO 650	SP.GUIDE DU EVO 650	55903, 55938, 55939, 55907, 55906, 55905
15	57687	1 REC.TUBO COARRUGADO DU EVO 850	SP.CORRUGATED TUBE DU EVO 850	54975, 54976, 54977
15	57686	1 REC.TUBO COARRUGADO DU EVO 650	SP.CORRUGATED TUBE DU EVO 650	55903, 55938, 55939, 55907, 55906, 55905
16	56875	1 REC.GRAPA TUBO COARRUGADO	SP.CORRUGATED PIPE CLAMP	

C



Part-list		ES	EN	Prod.	
17	56634	1	REC.TAPA DISCO DU EVO	SP.DISK COVER DU EVO	
18	57688	1	REC.PROTECTOR AGUA DU EVO	SP.WATER PROTECTOR DU EVO	
19	56631	1	REC.SOPORTE MOTOR DU EVO	SP.MOTOR SUPPORT DU EVO	
20	56640	2	REC.RODAMIENTO CONCENTRICO	SP.CONCENTRIC BEARING	
21	56641	2	REC.RODAMIENTO EXCENTRICO	SP.ECCENTRIC BEARING	
22	25858	1	BOMBA DE AGUA FY-120 220V 60HZ	SPARE WATER PUMP FY-120 220V 60HZ	55938
22	25444	1	BOMBA DE AGUA FY-120 110V 50/60HZ	SPARE WATER PUMP FY-120 110V 50/60HZ BOX	55907, 55906, 54976
22	25344	1	BOMBA DE AGUA FY-120 230V 50HZ	DU-200-BL SPARE WATER PUMP 230V 50HZ BOX	55903, 55939, 55905, 54975, 54977
23	56875	1	REC.GRAPA TUBO COARRUGADO	SP.CORRUGATED PIPE CLAMP	
24	57689	1	REC.MANGO RUBI REF:57689	SP.HANDLE RUBI REF:57689	
25	57713	1	REC.ADAPTADOR MANGUERA DU EVO	SP.HOSE ADAPTER DU EVO	

D



Part-list			ES	EN	Prod.
26	57693	1	REC.MOTOR 120V 60HZ DU EVO	SP.MOTOR 120V 60HZ DU EVO	55907, 54976
26	57692	1	REC.MOTOR 110V 50HZ DU EVO	SP.MOTOR 110V 50HZ DU EVO	55906
26	57691	1	REC.MOTOR 220V 60HZ DU EVO	SP.MOTOR 220V 60HZ DU EVO	55938
26	57690	1	REC.MOTOR 230V 50HZ DU EVO	SP.MOTOR 230V 50HZ DU EVO	55903, 55939, 55905, 54975, 54977
27	57698	1	REC.CABLE AUS 230V DU EVO	SP.CABLE AUS 230V DU EVO	55939
27	57697	1	REC.CABLE UK 230V DU EVO	SP.CABLE UK 230V DU EVO	55905, 54977
27	57696	1	REC.CABLE UK 110V DU EVO	SP.CABLE UK 110V DU EVO	55906
27	57695	1	REC.CABLE 110V DU EVO	SP.CABLE 110V DU EVO	54976, 55907
27	57694	1	REC.CABLE EUR 230V DU EVO	SP.CABLE EUR 230V DU EVO	55903, 54975, 55938
28	56633	1	REC.PLATOS DU EVO USA	SP.FLANGES DU EVO USA	55907, 54976
28	56632	1	REC.PLATOS DU EVO	SP.FLANGES DU EVO	55903, 938, 939, 906, 905, 54975, 54977
29	57705	1	REC.ARRANCADOR 110V DU EVO	SP.STARTER 110V DU EVO	55907, 55906, 54976
29	57701	1	REC.ARRANCADOR 220V 60HZ REF:57701	SP.STARTER 220V 60HZ REF:57701	55938
29	57699	1	REC.ARRANCADOR 230V 50HZ DU EVO	SP.STARTER 230V 50HZ DU EVO	55903, 55939, 55905, 54975, 54977
30	57706	1	REC.CAJA CONEXIONES DU EVO	SP.CONECTION BOX DU EVO	
31	57708	1	REC.CONDENSADOR 12MF 450V 50/60HZ	SP.CAPACITOR 12MF 450V 50/60HZ	55903, 55939, 55905, 54975, 54977, 55938
31	57707	1	REC.CONDENSADOR 60MF 250V 50/60HZ	SP.CAPACITOR 60MF 250V 50/60HZ	55907, 54976, 55906