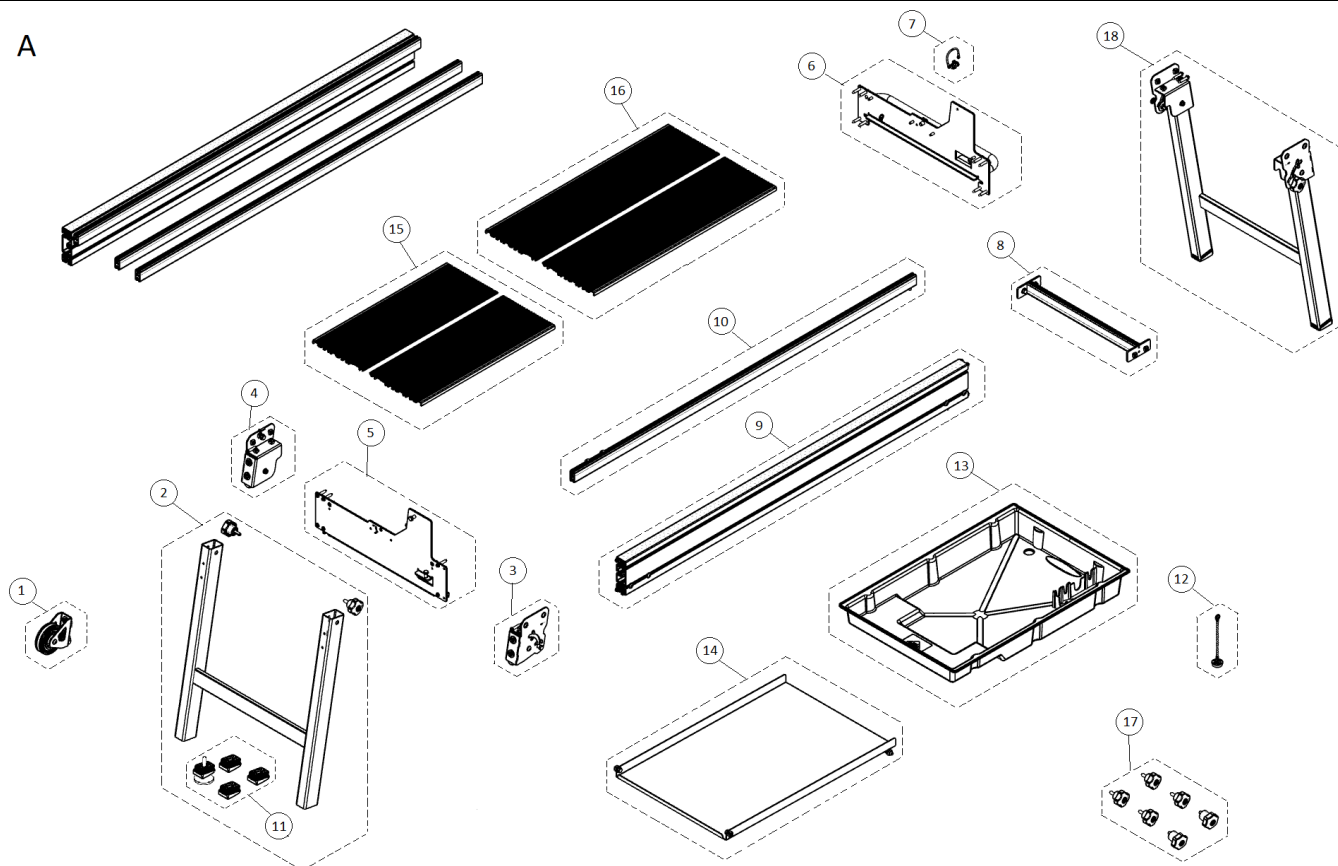
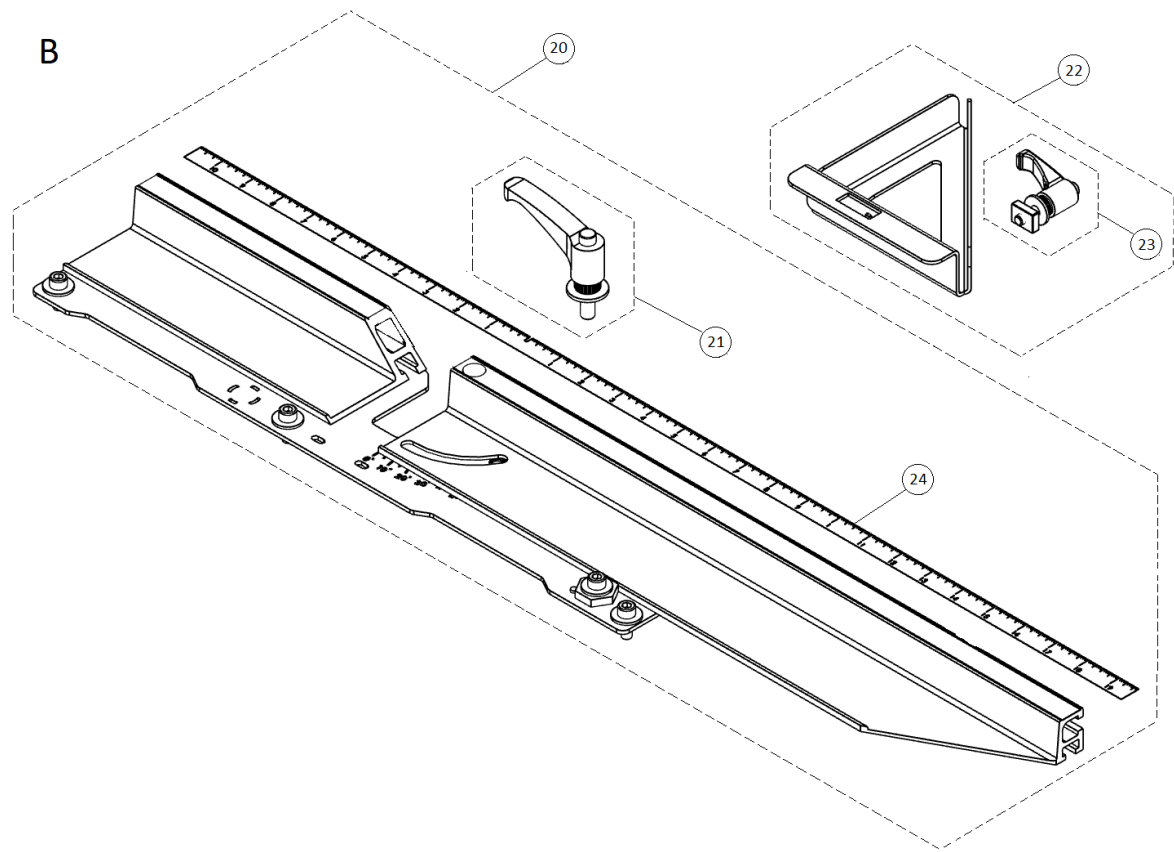


Part-list	ES	EN	Prod.
	GRUPO A	GROUP A	Pag. 2
888 88	GRUPO B	GROUP B	Pag. 3
	GRUPO C	GROUP C	Pag. 4
888 88	GRUPO D	GROUP D	Pag. 5
	GRUPO E	GROUP E	Pag. 6
888 88	GRUPO F	GROUP F	Pag. 7
	GRUPO F1	GROUP F1	Pag. 8

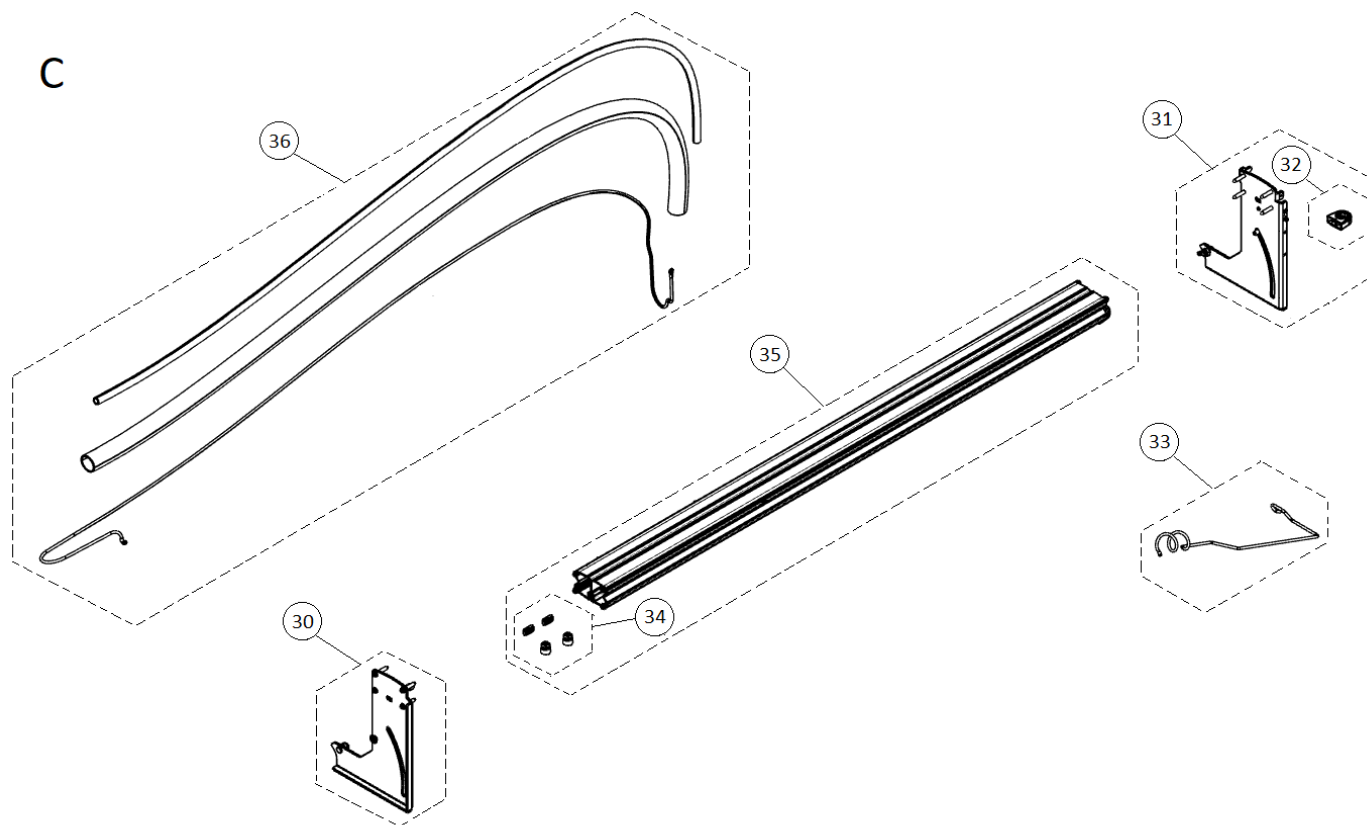
Prod	ES	EN	From serial num:
52944	DS-250-N 1500 120V 60HZ INCH C/DISCO	DS-250-N 1500 120V 60HZ INCH C/DISCO	904
52942	DS-250-N 1500 220V 60HZ -CORT.ELEC.	DS-250-N 1500 220V 60HZ	654
52940	DS-250-N 1500 230V 50HZ -CORT.ELEC.	DS-250-N 1500 230V 50HZ	14921
52934	DS-250-N 1300 120V 60HZ INCH C/DISCO	DS-250-N 1300 120V 60HZ INCH C/DISCO	5721
52930	DS-250-N 1300 230V 50HZ -CORT.ELEC.	DS-250-N 1300 230V 50HZ	52986
52920	DS-250-N 1000 230V 50HZ -CORT.ELEC.	DS-250-N 1000 230V 50HZ	835



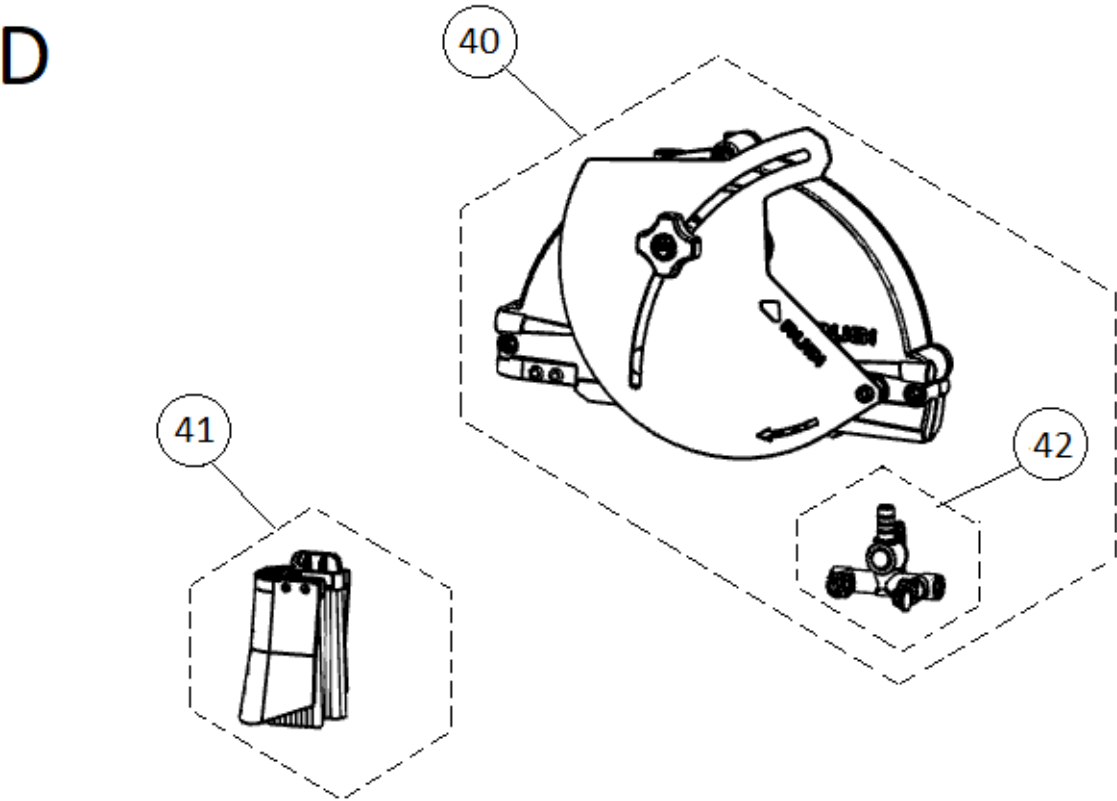
Part-list	ES	EN	Prod.
1 27804	2 REC.RUEDA REF:27804	SP.WHEEL REF:27804	
2 27859	1 REC.PATA TRASERA REF:27859	SP.REAR LEG REF:27859	
3 27805	2 REC.SOPORTE PATAS DER. REF:27805	SP.RIGHT LEGS SUPPORT REF:27805	
4 27806	2 REC.SOPORTE PATAS IZQ.REF:27806	SP.LEFT LEGS SUPPORT REF:27806	
5 27807	1 REC.FRONTAL DEL.REF:27807	SP.FRONT HEAD REF:27807	
6 27808	1 REC.FRONTAL TRAS.REF:27808	SP.FRONT FOREHEAD REF:27808	
7 27267	1 REC.CABLE TIERRA BRAZO REF:27267	SP.GROUND CABLE ARM REF:27267	
8 27259	1 REC.DISTANCIADOR CHASIS REF:27259	SP.CHASSIS SPACER REF:27259	
9 27374	2 REC.PERFIL CHASIS DS 1500	SP.DS 1500 CHASSIS PROFILE	52940, 52942, 52944
9 27305	2 REC.PERFIL CHASIS 1300 REF:27305	SP.CHASSIS PROFILE 1300 REF:27305	52930, 52934
9 27262	2 REC.PERFIL CHASIS 1000 REF:27262	SP.CHASSIS PROFILE 1000 REF:27262	52920
10 27379	4 REC.PERFIL ESTRUCTURA DS 1500	SP.STRUCTURE PROFILE DS 1500	52940, 52942, 52944
10 27306	4 REC.PERFIL ESTRUCTURA 1300 REF:27306	SP.STRUCTURE PROFILE 1300 REF:27306	52930, 52934
10 27263	4 REC.PERFIL ESTRUCTURA 1000 REF:27263	SP.STRUCTURE PROFILE 1000 REF:27263	52920
11 56776	1 REC.KIT CONTERAS REF:56776	SP.END CAPS KIT REF:56776	
12 57260	1 REC.TAPON CON CADENA Ø 35	SP.PLUG WITH CHAIN Ø 35	
13 27261	1 REC.DEPOSITO REF:27261	SP.TANK REF:27261	
14 27380	1 REC.DECANTADOR DS 1500	SP.DECANTER DS 1500	52940, 52942, 52944
14 27371	1 REC.DECANTADOR 1300 REF:27371	SP.DECANTER 1300 REF:27371	52930, 52934
14 27260	1 REC.DECANTADOR 1000 REF:27260	SP.DECANTER 1000 REF:27260	52920
15 57243	1 REC.JUEGO MESAS CORTAS	SP.SHORT TABLE SET	52920, 52940, 52942, 52944
16 57242	2 REC.JUEGO MESAS LARGAS	SP.LONG TABLE SET	52930, 52934, 52940, 52942, 52944
17 27809	1 REC.KIT POMOS REF:27809	SP.KNOBS KIT REF:27809	
18 27803	1 REC.PATA DELANTERA REF:27803	SP.FRONT LEG REF:27803	



Part-list		ES	EN	Prod.	
20	27269	1	REC.TOPE MESA REF:27269	SP.TABLE TOP REF:27269	
21	56879	1	REC.MANETA TOPE MESA REF:56879	SP.HANDLE TABLE STOP REF:56879	
22	54843	1	REC.TOPE LATERAL REF:54843	SP.SIDE STOP REF:54843	
23	52823	1	REC.MANETA TOPE 45°	SP.HANDLE 45° STOP	
24	27835	1	REC.CINTA METRICA INCH REF:27835	SP.TAPE MEASURE INCH REF:27835	52934, 52944
24	27834	1	REC.CINTA METRICA MM REF:27834	SP.TAPE MEASURE MM REF:27834	52920, 52930, 52940, 52942

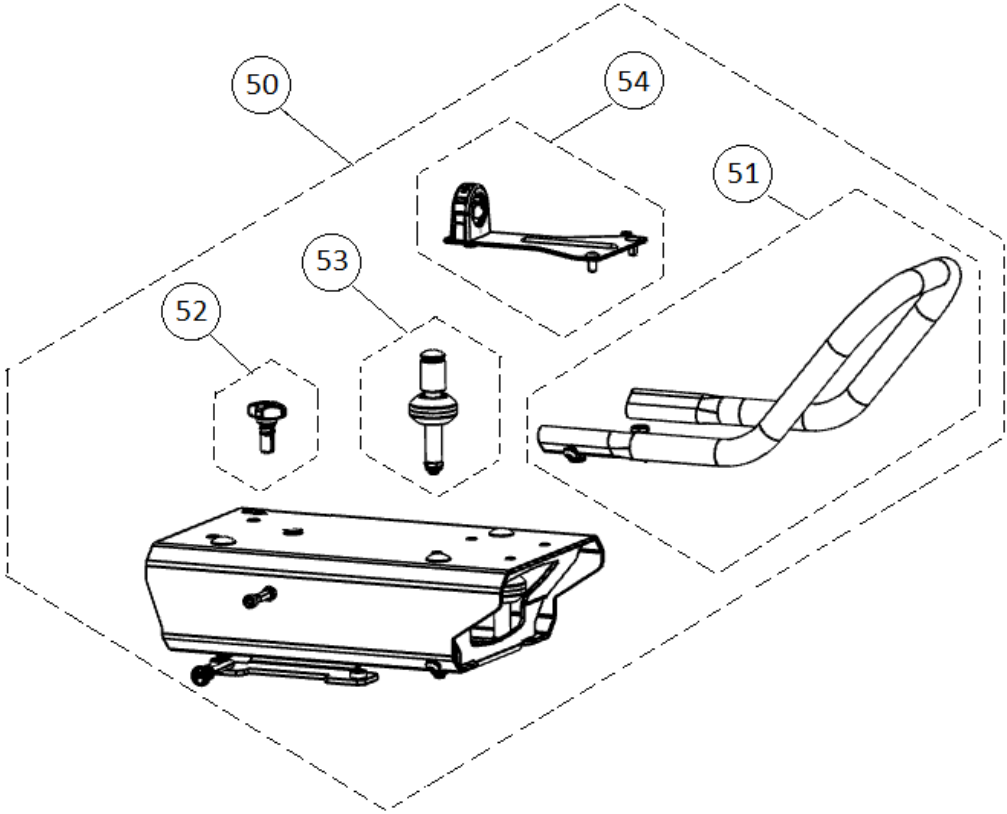


Part-list	ES	EN	Prod.
30 51872 1	REC.BRAZO ANTERIOR DS	SP.FRONT ARM DS	
31 51871 1	REC.BRAZO POSTERIOR DS	SP.REAR ARM DS	
32 56875 2	REC.GRAPA TUBO COARRUGADO REF:56875	SP.CLAMP CORRUGATED PIPE REF:56875	
33 56678 1	REC.ALZADOR REF:56678	SP.LIFTER REF:56678	
34 27274 1	REC.FRENO RECORRIDO GUIA REF:27274	SP.BRAKE TRAVEL GUIDE REF:27274	
35 51873 1	REC.GUIA DS 1500	SP.DS 1500 GUIDE	52940, 52942, 52944
35 27273 1	REC.GUIA 1300 REF:27273	SP.GUIDE 1300 REF:27273	52930, 52934
35 27272 1	REC.GUIA 1000 REF:27272	SP.GUIDE 1000 REF:27272	52920
36 27812 1	REC.KIT TUBOS 1500 DS	SP.TUBE 1500 DS	52940, 52942, 52944
36 27811 1	REC.KIT TUBOS 1300 REF:27811	SP.TUBE 1300 KIT REF:27811	52930, 52934
36 27810 1	REC.KIT TUBOS 1000 REF:27810	SP.TUBE 1000 KIT REF:27810	52920



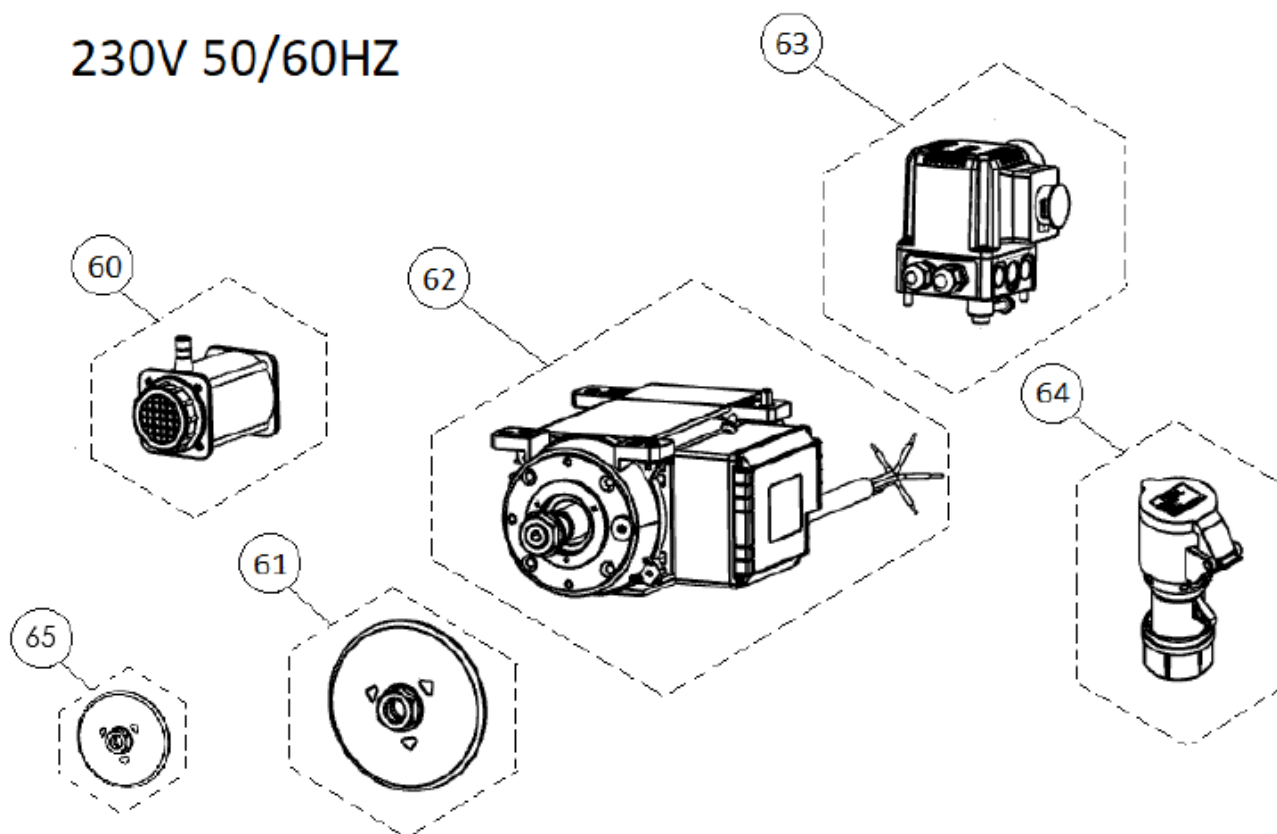
Part-list				ES	EN	Prod.
40	56659	1	REC.PROTECTOR DISCO DS		SP.DS DISK PROTECTOR	
41	56654	1	REC.ZERO DUST REF:56654		SP.ZERO DUST REF:56654	
42	27280	1	REC.REGULADOR CAUDAL		SP.FLOW REGULATOR	

E



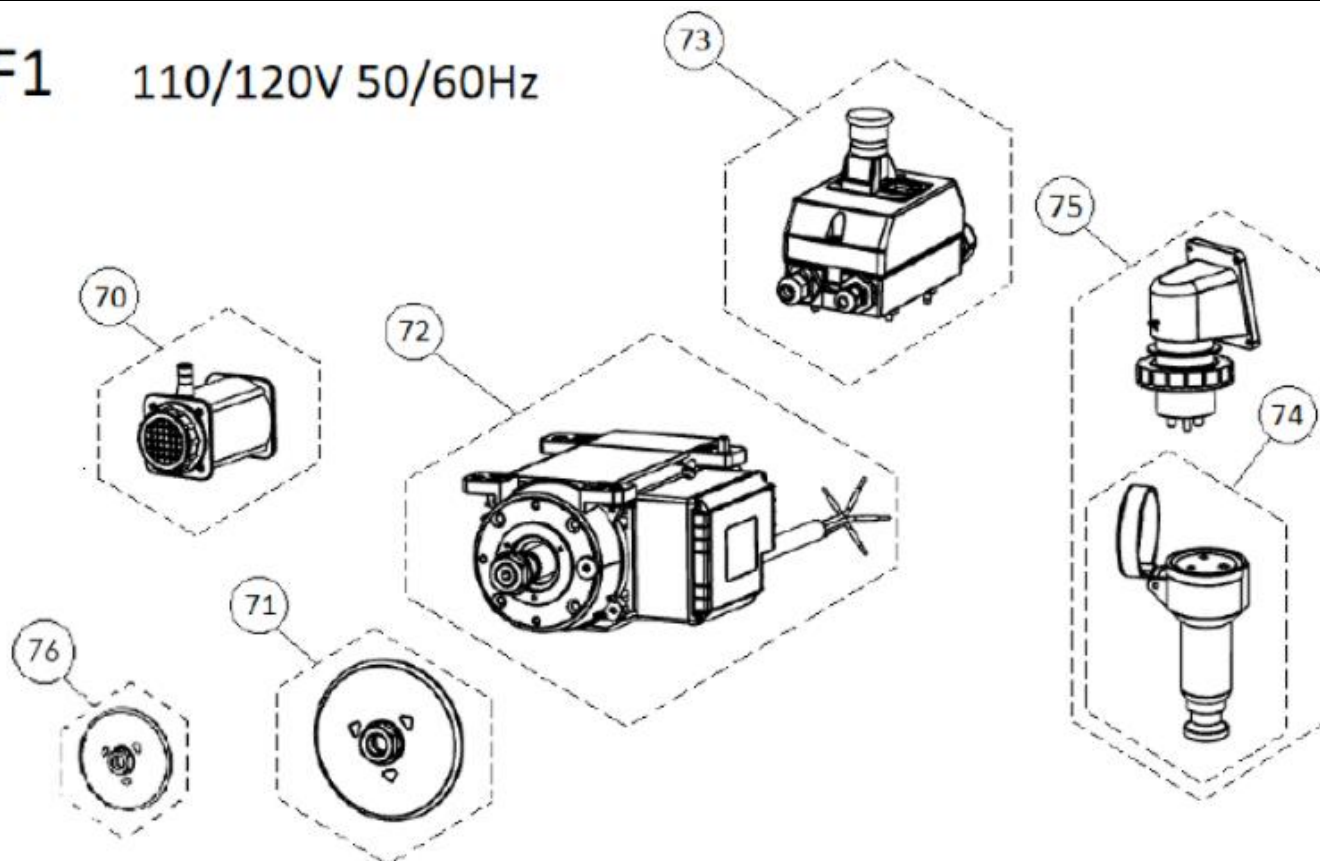
Part-list			ES	EN	Prod.
50	51870	1	REC.CARRO DS	SP.DS TROLLEY	
51	27295	1	REC.ASA CARRO REF:27295	SP.HANDEL TROLLEY REF:27295	
52	51868	1	REC.FRENO CARRO DS	SP.DS TROLLEY BRAKE	
53	27297	4	REC.RUEDA CARRO REF:27297	SP.TROLLEY WHEEL REF:27297	
54	51869	1	REC.FIJACION TUBO COARRUGADO DS 1500	SP.CORRUGATED PIPE FIXATION DS 1500	52940, 52942, 52944
54	27291	1	REC.FIJACION TUBO COARRUGADO REF:27291	SP.FIXING CORRUGATED PIPE REF:27291	52920, 52930, 52934

F 230V 50/60HZ



Part-list	ES	EN	Prod.
60 56973 1	REC.BOMBA DE AGUA B200 3,6M 230V	SP.B-200 SPARE WATER PUMP 230V	52920, 52930, 52940, 52942
61 27815 1	REC.PLATOS DS	SP.FLANGES DS	52920, 52930, 52940, 52942
62 27817 1	REC.MOTOR 220V 60HZ REF:27817	SP.MOTOR 220V 60HZ REF:27817	52942
62 27816 1	REC.MOTOR 230V 50HZ REF:27816	SP.MOTOR 230V 50HZ REF:27816	52920, 52930, 52940
63 56670 1	REC.ARRANCADOR 230V 60HZ REF:56670	SP.STARTER 230V 60HZ REF:56670	52942
63 56669 1	REC.ARRANCADOR 230V 50HZ REF:56669	SP.STARTER 230V 50HZ REF:56669	52920, 52930, 52940
64 27832 1	REC.BASE AEREA REF:27832	SP.WANDER SOCKET REF:27832	52920, 52930, 52940, 520942
65 51867 1	REC.PLATOS REF:51867	SP.FLANGES REF:51867	52920, 52930, 52940, 52942

F1 110/120V 50/60Hz



Part-list	ES	EN	Prod.
70	56974 1 REC.BOMBA DE AGUA B200 3,6M 110V	SP.B-200 SPARE WATER PUMP 110V	52934, 52944
71	27815 1 REC.PLATOS DS	SP.FLANGES DS	52934, 52944
72	27839 1 REC.MOTOR 110V 50HZ REF:27839	SP.MOTOR 110V 50HZ REF:27839	
72	27818 1 REC.MOTOR 120V 60HZ REF:27818	SP.MOTOR 120V 60HZ REF:27818	52934, 52944
73	51874 1 REC.ARRANCADOR 110V USA REF:51874	SP.STARTER 110V USA REF:51874	52934, 52944
73	27836 1 REC.ARRANCADOR 110V 50HZ REF:27836	SP.STARTER 110V 50HZ REF:27836	
74	27833 1 REC.BASE AEREA USA REF:27833	SP.WANDER SOCKET USA REF:27833	52934, 52944
75	27813 1 REC.ADAPT.ENCHUFE 2P-T MACHO REF:27813	SP.2P+T MALE PLUG ADAPTER REF:27813	52934, 52944
76	51867 1 REC.PLATOS REF:51867	SP.FLANGES REF:51867	52934, 52944